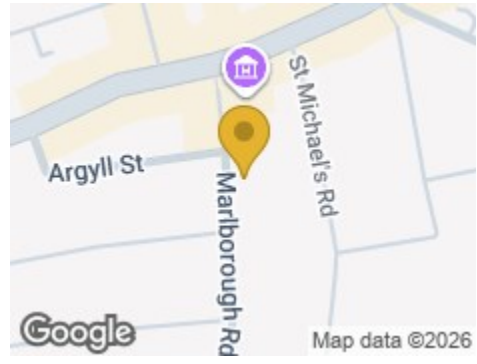


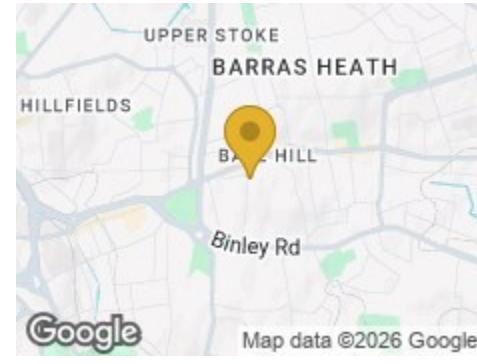
Road Map



Hybrid Map



Terrain Map



MATTHEW JAMES
Property Services



Floor Plan



29 Marlborough Road

, Coventry CV2 4EN

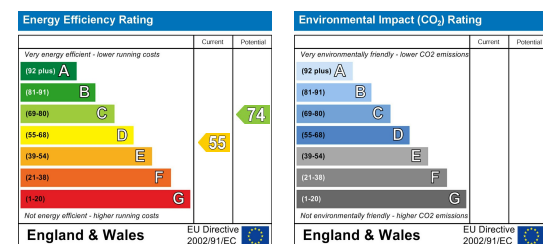
Offers Over £145,000



Viewing

Please contact us on 02477 170170 if you wish to arrange a viewing appointment for this property or require further information.

Energy Efficiency Graph



These particulars, whilst believed to be accurate are set out as a general outline only for guidance and do not constitute any part of an offer or contract. Intending purchasers should not rely on them as statements of representation of fact, but must satisfy themselves by inspection or otherwise as to their accuracy. No person in this firm's employment has the authority to make or give any representation or warranty in respect of the property.

CONTACT INFORMATION

24a Warwick Row, Coventry CV1 1EY

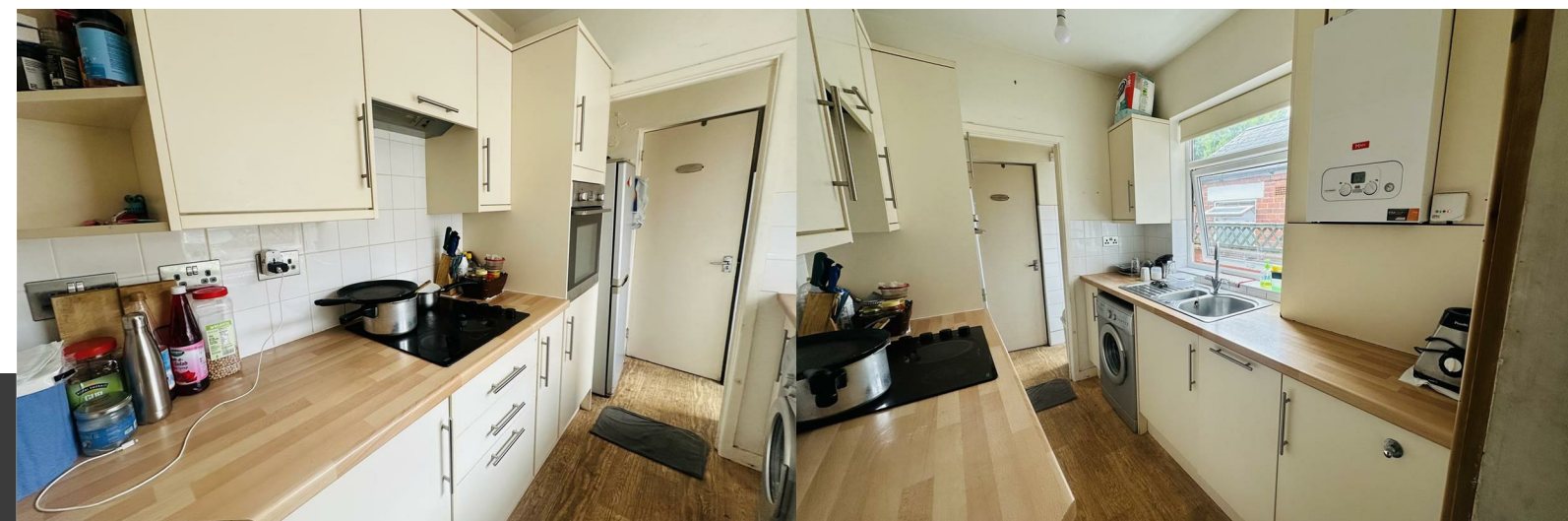
02477 170170

info@matthewjames.uk.com

www.matthewjames.uk.com

Facebook

Twitter



29 Marlborough Road

, Coventry CV2 4EN

Offers Over £145,000



Living Room

Dining Room

kitchen

Shower room

Bedroom One

Bedroom Two

WC

Garden

